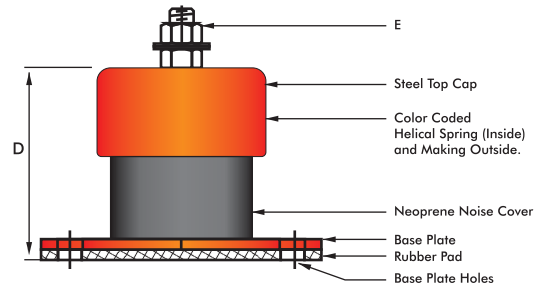
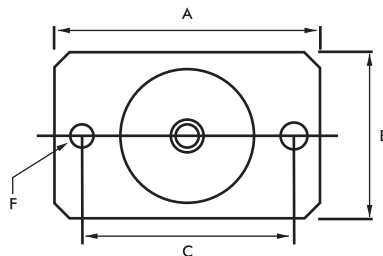




## Specifications

A unique range of spring mountings designed primarily for building services applications where the control of low frequency vibrations and noise emanating from mechanical plants is of paramount importance.

The benefits of a combined rubber and steel housing for the spring have helped establish the EFESI mount as an industry standard accepted by specifier, equipment manufacturers and mechanical services installers.



## Design Feature

- Nitrile rubber (oil resistant) lower spring housing eliminates the possibility of metallic continuity and ensures excellent acoustic performance.
- Fully enclosed captive assembly protects the spring and controls transient motion.
- All steel components are zinc plated.
- Nominal 1" & 2" deflection color coded helical steel springs to BS1726 Class B.
- Laterally stable Springs with 50% overload capacity.
- Simple single screw height adjustment.
- Ribbed Rubber pads on base.
- Color coded Spring for easy identification.
- Stainless Steel and Zinc Electroplated variants available.

## Typical Applications

- Axial and Centrifugal Fans.
- Air Handling Units.
- Chillers and Cooling Towers.
- Rotary and Multi Cylinder Compressors.
- Mechanical Test Rigs.
- Isolation of Sensitive Equipment.
- Blowers
- Inertia Bases
- Diesel Gensets

Part No.	Colour Code	Rated Load (lbs)	Deflection At Rated Load (inch)	Dimensions (inch)					
				A	B	C	D	E	F (inch)
EFESI 25/30	Yellow	66	1"						
EFESI 25/60	Green	132	1"						
EFESI 25/100	Blue	220	1"	4.33	2.76	3.35	3.54	M10	0.39
EFESI 25/160	White	352	1"						
EFESI 25/250	Red	550	1"						
EFESI 25/200	Red	440	1"						
EFESI 25/300	Purple	660	1"						
EFESI 25/400	Grey	880	1"						
EFESI 25/500	Orange	1100	1"						
EFESI 25/600	Brown	1320	1"	7.09	3.74	5.51	5.43	M16	0.55
EFESI 25/700	Orange	1540	1"						
EFESI 25/800	Black	1760	1"						
EFESI 50/100	Yellow	220	2"						
EFESI 50/200	Green	440	2"						
EFESI 50/300	Blue	660	2"						
EFESI 50/400	White	880	2"	7.09	3.74	5.51	6.89	M16	0.55
EFESI 50/500	Black	1100	2"						

## Compliance - Springs designed according to BS 1726 (Part 1) and recommendations made by SAE (US) and ASHRAE

- Due to policy of continual improvement, the specifications are subject to change without prior notice.
- Measurements are subject to 5% tolerance.
- To achieve good sound suppression do not over load fitting.