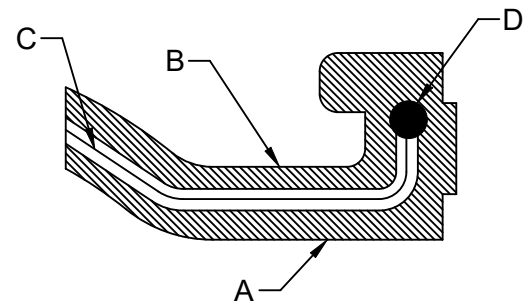
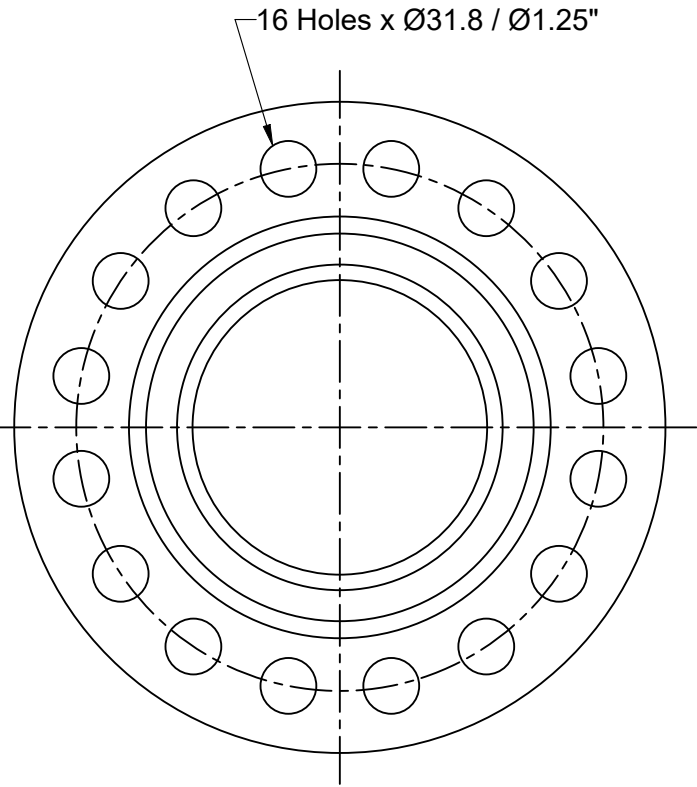
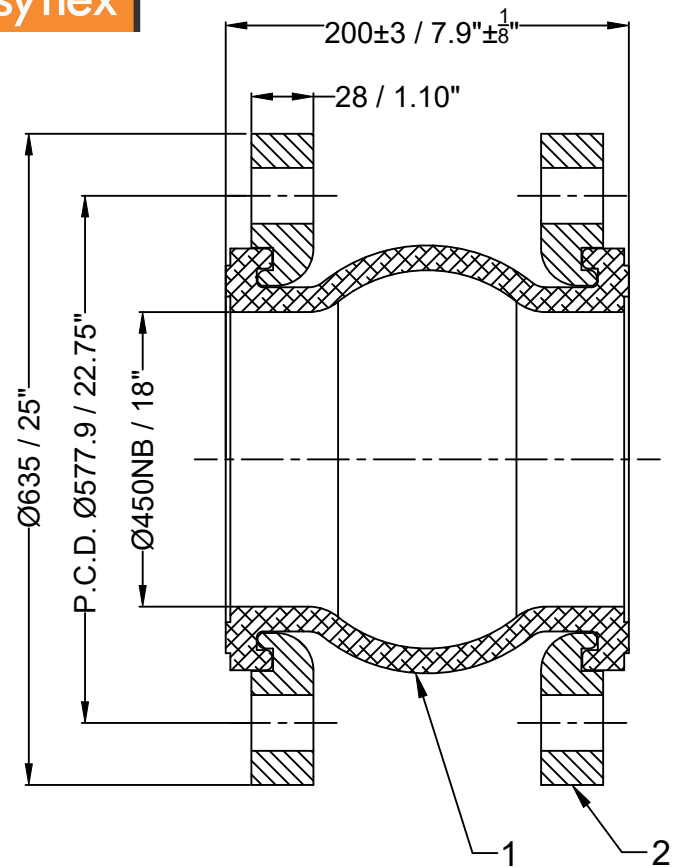


Confidential : All rights reserved ISO 16016. No part of this document may be reproduced, stored in a retrieval system, or transmitted, in any form or by any means, without prior permission. All rights reserved in the event of the granting of a patent or the registration of a utility model or design. Offenders will be held liable for the payment of damages.



Bellow Cross-Section Details

A.	Inner Cover EPDM
B.	Outer Cover EPDM
C.	Reinforce nylon cord fabric
D.	Hard steel wire

Design Code:	FSA USA Standard		
Size:(DN)	450	18 "	
Pressure Rating :	20 bar(g)	290 PSI(g)	
Max. Temperature :	115°C	239°F	
Test Pressure:	30 bar(g)	435 PSI(g)	

Movement Capacity:	(+)		(-)	
	(mm)	(Inch)	(mm)	(Inch)
Axial Movement:	15	0.59"	16	0.63"
Lateral Movement:	16	0.63"	16	0.63"
Angular Movement:	15°	15°	15°	15°

Notes :  
1. Bellow Tolerance will be as per FSA USA Standard.  
2. Flange drill dimension will be as per ANSI B16.5#150.  
3. Matching flange should be of flat face .  
Testing :  
1. Raw material check test for chemical composition and mechanical properties.  
2. Dimension and visual check.

No	Revision Description	Date

Space for Client Approval

Seal & Signature

2	Flange	SS 304	2
1	Bellow	EPDM	1
Sl.No.	Description	Material	Pcs

Bill of Material

Title:-EPDM Floating Flange Rubber Expansion Joint with SS304 Floating Flanges

Client Name:-

DRAWN BY	
CHECKED BY	
APPROVED BY	
SCALE: NTS	
DRAWING No.	
DATE	
REV:- 00	

OWNER :  
Easyflex / VibraSystems