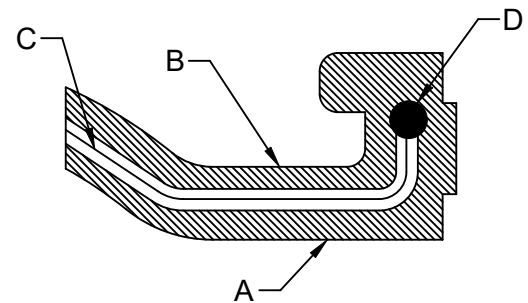
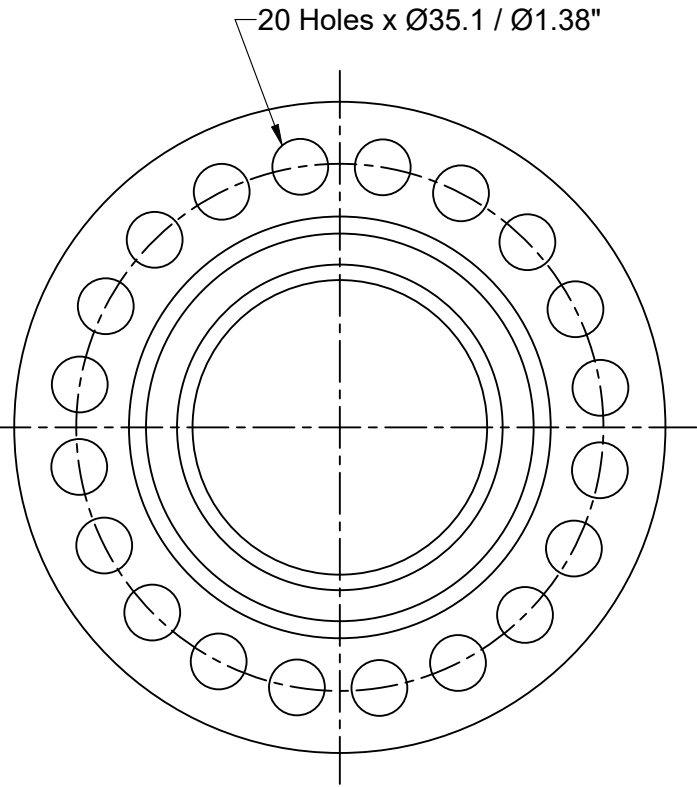
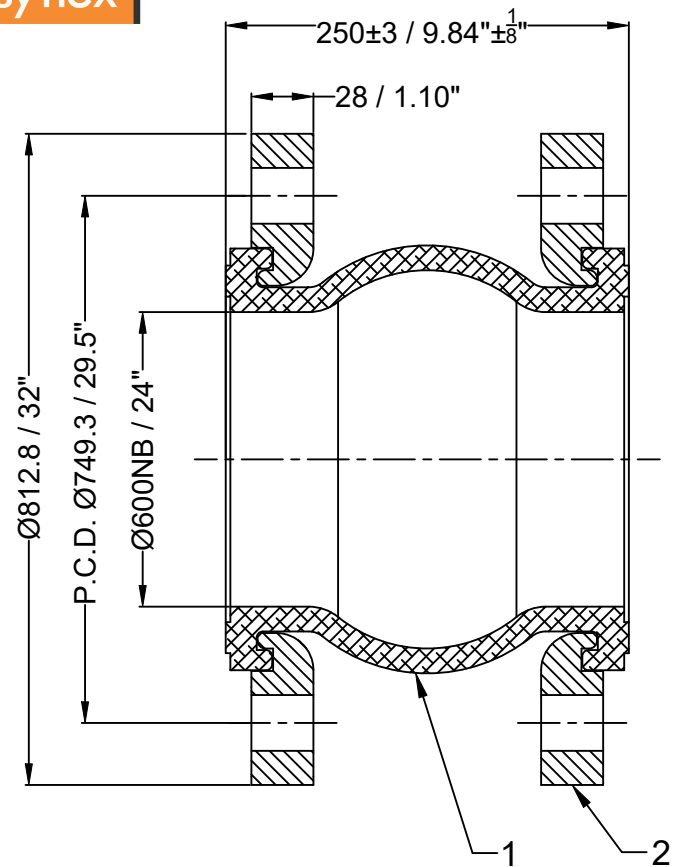


Confidential : All rights reserved ISO 16016. No part of this document may be reproduced, stored in a retrieval system, or transmitted, in any form or by any means, without prior permission. All rights reserved in the event of the granting of a patent or the registration of a utility model or design. Offenders will be held liable for the payment of damages.



Bellow Cross-Section Details

A.	Inner Cover EPDM
B.	Outer Cover EPDM
C.	Reinforce nylon cord fabric
D.	Hard steel wire

Design Code:	FSA USA Standard			
Size:(DN)	600		24 "	
Pressure Rating :	16 bar(g)		232 PSI(g)	
Max. Temperature :	115°C		239°F	
Test Pressure:	24 bar(g)		348 PSI(g)	
Movement Capacity:	(+)		(-)	
	(mm)	(Inch)	(mm)	(Inch)
Axial Movement:	15	0.59"	16	0.63"
Lateral Movement:	16	0.63"	16	0.63"
Angular Movement:	15°	15°	15°	15°

Space for Client Approval

Seal & Signature

2	Flange	IS 2062 Gr.B (Hot Dip Galvanized)	2
1	Bellow	EPDM	1
Sl.No.	Description	Material	Pcs

Bill of Material

Title:-EPDM Floating Flange Rubber Expansion Joint with ASTM 105 Floating Flanges

Client Name:-			
DRAWN BY		OWNER : Easyflex / VibraSystems	
CHECKED BY			
APPROVED BY			
SCALE: NTS			
DRAWING No.			
DATE		REV:- 00	

Notes :				
1. Bellow Tolerance will be as per FSA USA Standard.				
2. Flange drill dimension will be as per ANSI B16.5#150.				
3. Matching flange should be of flat face .				
Testing :				
1. Raw material check test for chemical composition and mechanical properties.				
2. Dimension and visual check.				
No	Revision Description			Date