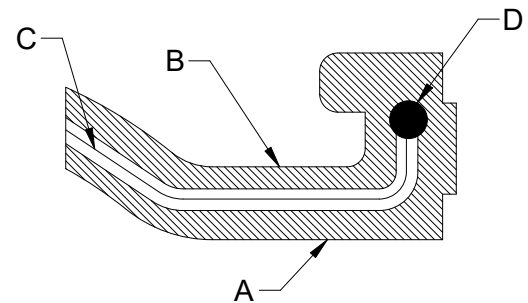
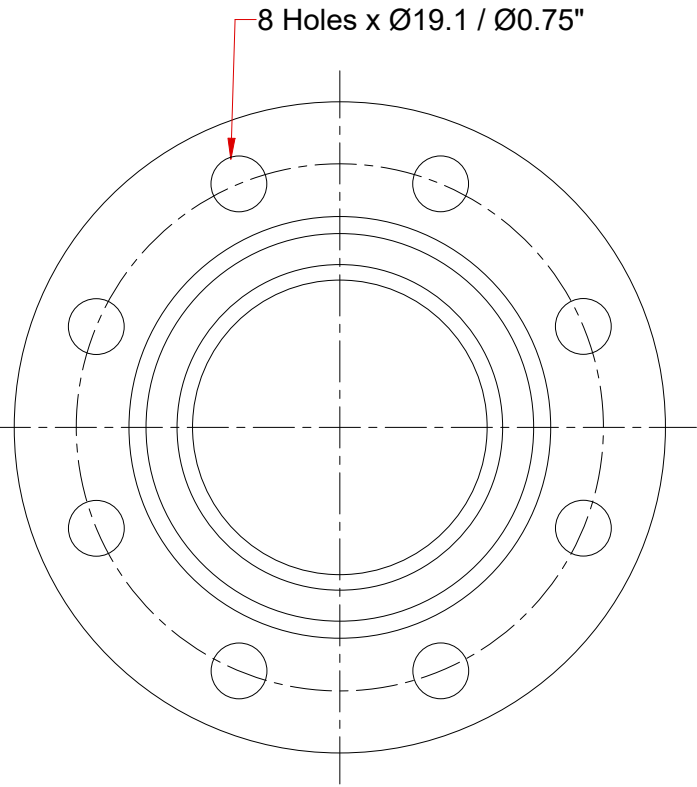
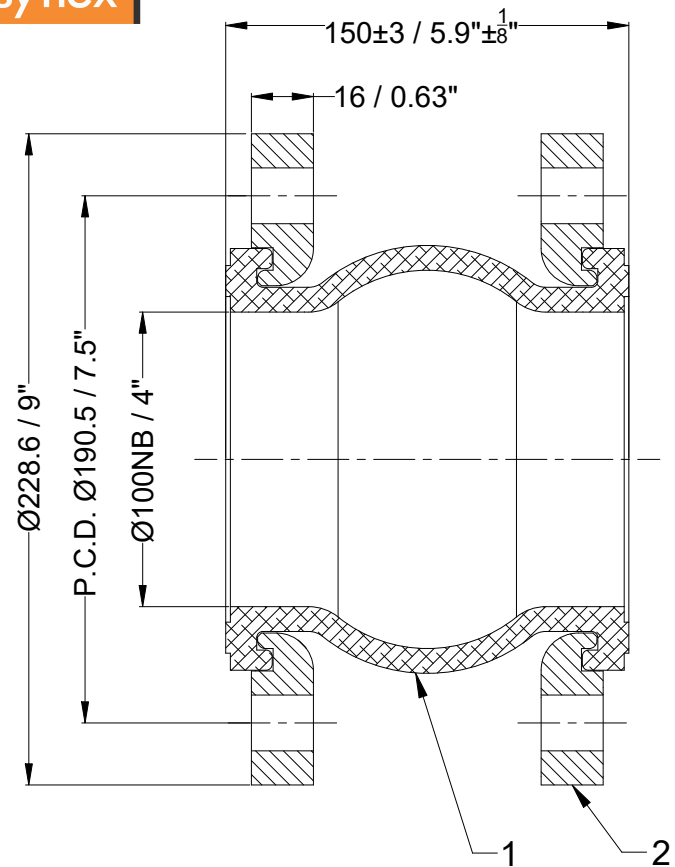


Confidential : All rights reserved ISO 16016. No part of this document may be reproduced, stored in a retrieval system, or transmitted, in any form or by any means, without prior permission. All rights reserved in the event of the granting of a patent or the registration of a utility model or design. Offenders will be held liable for the payment of damages.



A.	Inner Cover EPDM
B.	Outer Cover EPDM
C.	Reinforce nylon cord fabric
D.	Hard steel wire

Design Code:	FSA USA Standard			
Size:(DN)	100		4 "	
Pressure Rating :	16 bar(g)		232 PSI(g)	
Max. Temperature :	115°C		239°F	
Test Pressure:	24 bar(g)		348 PSI(g)	
Movement Capacity:	(+)		(-)	
	(mm)	(Inch)	(mm)	(Inch)
Axial Movement:	12	0.47"	16	0.63"
Lateral Movement:	16	0.63"	16	0.63"
Angular Movement:	15°	15°	15°	15°

Notes :				
1. Bellow Tolerance will be as per FSA USA Standard.				
2. Flange drill dimension will be as per ANSI B16.5#150.				
3. Matching flange should be of flat face .				
Testing :				
1. Raw material check test for chemical composition and mechanical properties.				
2. Dimension and visual check.				
No	Revision Description			Date

2	Flange	SS 304	2
1	Bellow	EPDM	1
Sl.No.	Description	Material	Pcs

Bill of Material			
Title:-EPDM Floating Flange Rubber Expansion Joint with SS304 Floating Flanges			
Client Name:-			
DRAWN BY		OWNER : Easyflex / VibraSystems	
CHECKED BY			
APPROVED BY			
SCALE: NTS			
DRAWING No.			
DATE			
		REV:- 00	