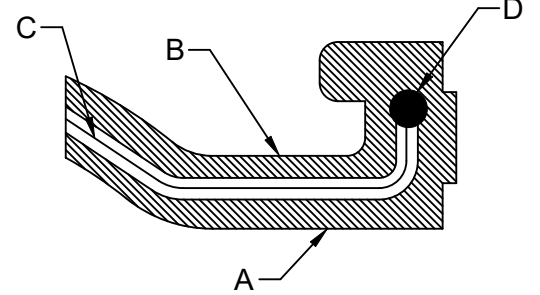
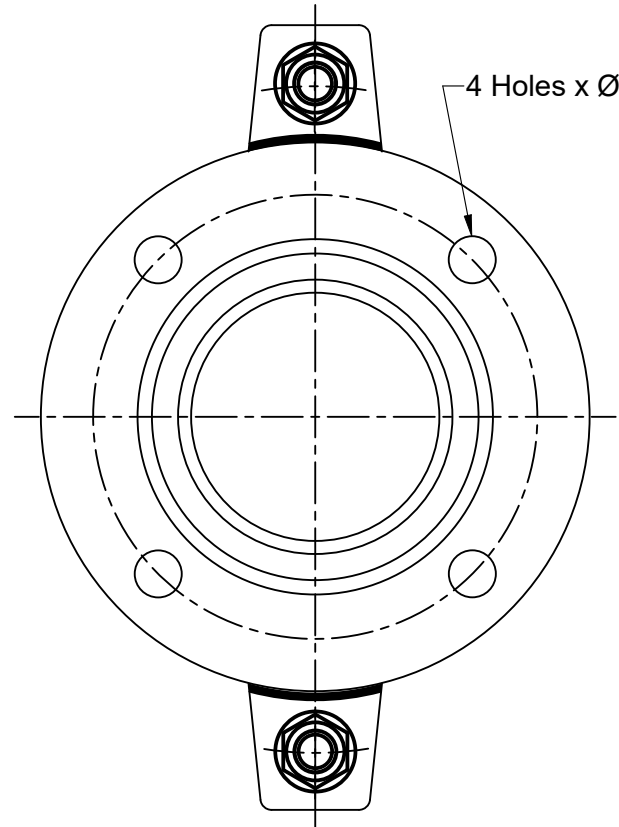
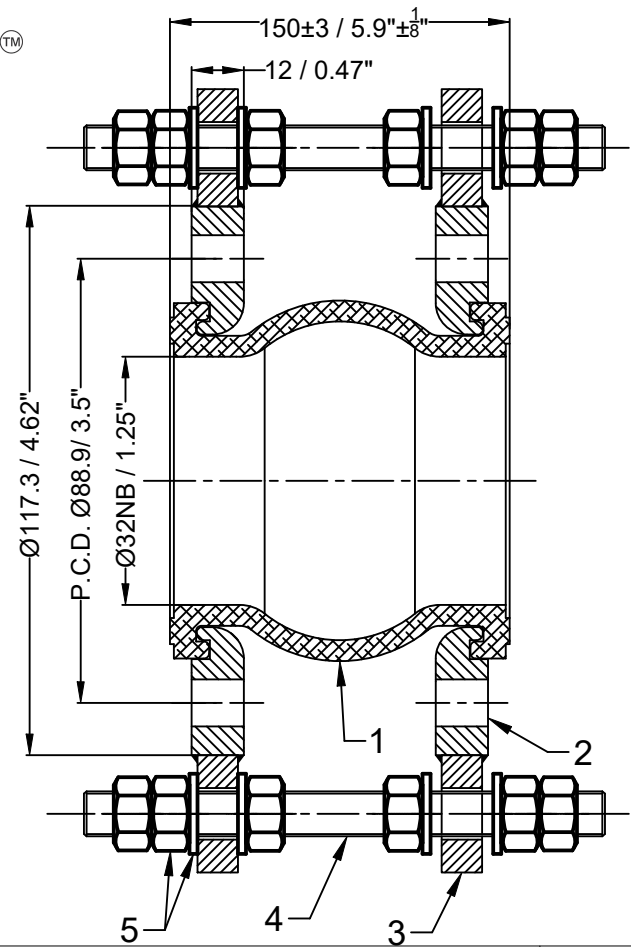


Confidential : All rights reserved ISO 16016. No part of this document may be reproduced, stored in a retrieval system, or transmitted, in any form or by any means, without prior permission. All rights reserved in the event of the granting of a patent or the registration of a utility model or design. Offenders will be held liable for the payment of damages.



Bellow Cross-Section Details

A.	Inner Cover EPDM
B.	Outer Cover EPDM
C.	Reinforce nylon cord fabric
D.	Hard steel wire

Design Code:	FSA USA Standard			
Size:(DN)	32		1.25 "	
Pressure Rating :	20 bar(g)		290 PSI(g)	
Max. Temperature :	115°C		239°F	
Test Pressure:	30 bar(g)		435 PSI(g)	
Movement Capacity:	(+)		(-)	
	(mm)	(Inch)	(mm)	(Inch)
Axial Movement:	12	0.47"	13	0.52"
Lateral Movement:	13	0.52"	13	0.52"
Angular Movement:	15°	15°	15°	15°

Seal & Signature

5	Nut , Washer	SS 304	20
4	Limit Rod	SS 304	2
3	Lugs	SS 304	4
2	Flange	SS 304	2
1	Bellow	EPDM	1
Sl.No.	Description	Material	Pcs

Bill of Material

Title:-EPDM Floating Flange Rubber Expansion Joint with Floating Flanges

Client Name:-

DRAWN BY
CHECKED BY
APPROVED BY

OWNER :
Easyflex / VibraSystems

SCALE: NTS

DRAWING No.
DATE

REV:- 00

- Notes :
- 1. Bellow Tolerance will be as per FSA USA Standard.
 - 2. Flange drill dimension will be as per ANSI B16.5#150.
 - 3. Matching flange should be of flat face .
- Testing :
- 1. Raw material check test for chemical composition and mechanical properties.
 - 2. Dimension and visual check.

No	Revision Description	Date
----	----------------------	------