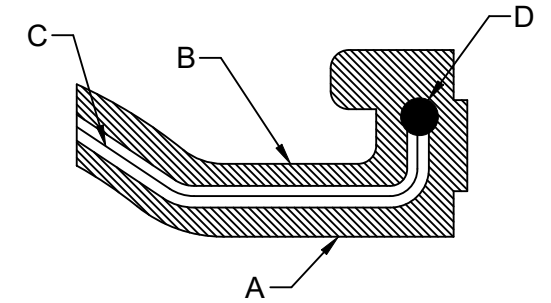
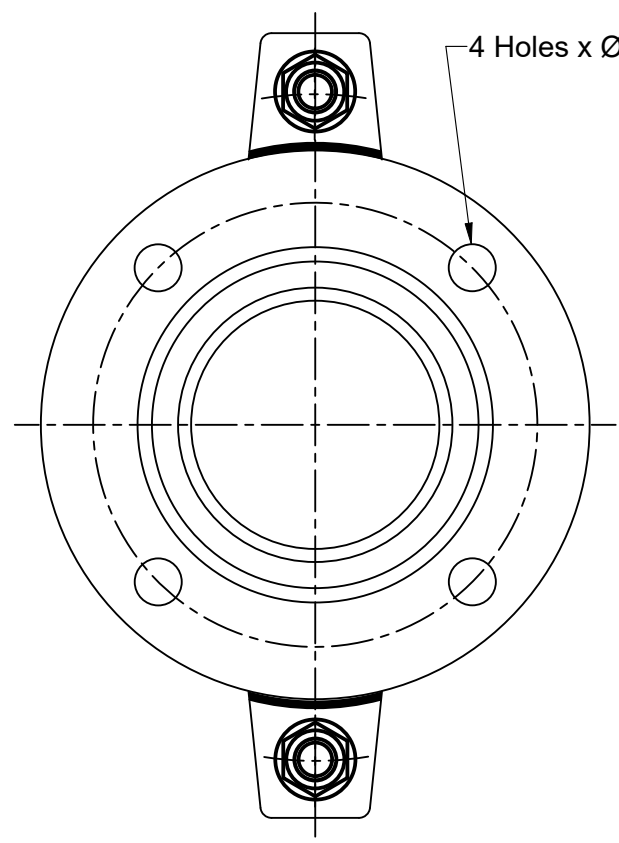
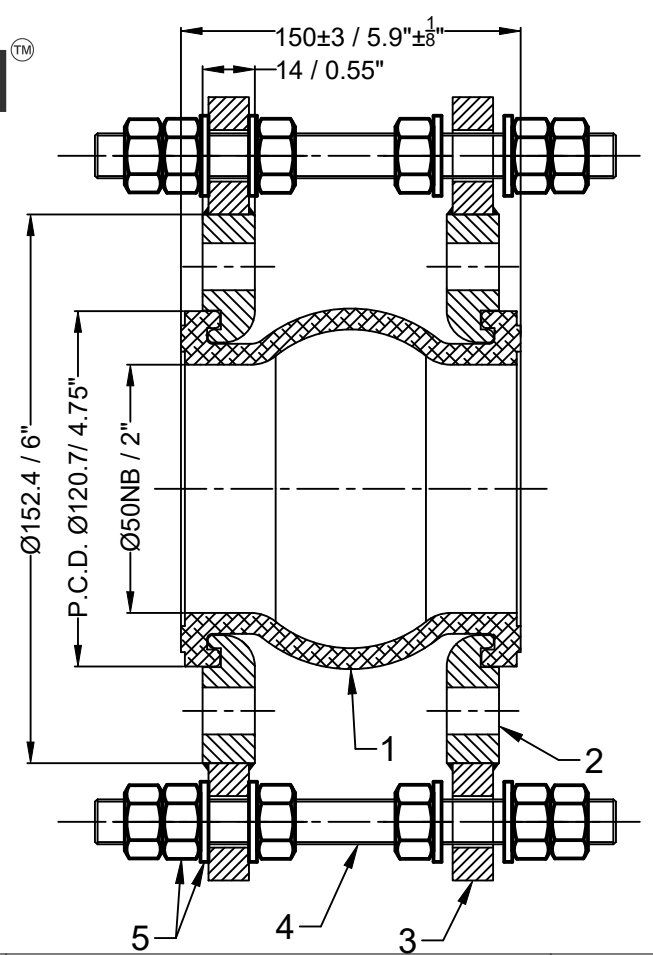


Confidential : All rights reserved ISO 16016. No part of this document may be reproduced, stored in a retrieval system, or transmitted, in any form or by any means, without prior permission. All rights reserved in the event of the granting of a patent or the registration of a utility model or design. Offenders will be held liable for the payment of damages.



Bellow Cross-Section Details

A.	Inner Cover EPDM
B.	Outer Cover EPDM
C.	Reinforce nylon cord fabric
D.	Hard steel wire

Design Code:	FSA USA Standard			
Size:(DN)	50	2 "		
Pressure Rating :	20 bar(g)	290 PSI(g)		
Max. Temperature :	115°C	239°F		
Test Pressure:	30 bar(g)	435 PSI(g)		

Movement Capacity:	(+)		(-)	
	(mm)	(Inch)	(mm)	(Inch)
Axial Movement:	12	0.47"	13	0.52"
Lateral Movement:	13	0.52"	13	0.52"
Angular Movement:	15°	15°	15°	15°

Seal & Signature

- Notes :
- 1. Bellow Tolerance will be as per FSA USA Standard.
 - 2. Flange drill dimension will be as per ANSI B16.5#150.
 - 3. Matching flange should be of flat face .
- Testing :
- 1. Raw material check test for chemical composition and mechanical properties.
 - 2. Dimension and visual check.

No	Revision Description	Date
----	----------------------	------

5	Nut , Washer	IS 1367 Cl 4.0,IS 2016 (Zinc Electroplated)	20
4	Limit Rod	IS 1367 Cl 4.6 (Zinc Electroplated)	2
3	Lugs	IS 2062 Gr.B (Hot Dip Galvanized)	4
2	Flange	IS 2062 Gr.B (Hot Dip Galvanized)	2
1	Bellow	EPDM	1
Sl.No.	Description	Material	Pcs

Bill of Material

Title:-EPDM Floating Flange Rubber Expansion Joint with Floating Flanges

Client Name:-

DRAWN BY	
CHECKED BY	
APPROVED BY	
SCALE: NTS	
DRAWING No.	
DATE	
REV:- 00	

OWNER :
Easyflex / VibraSystems