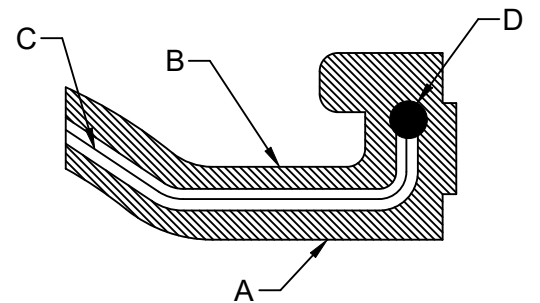
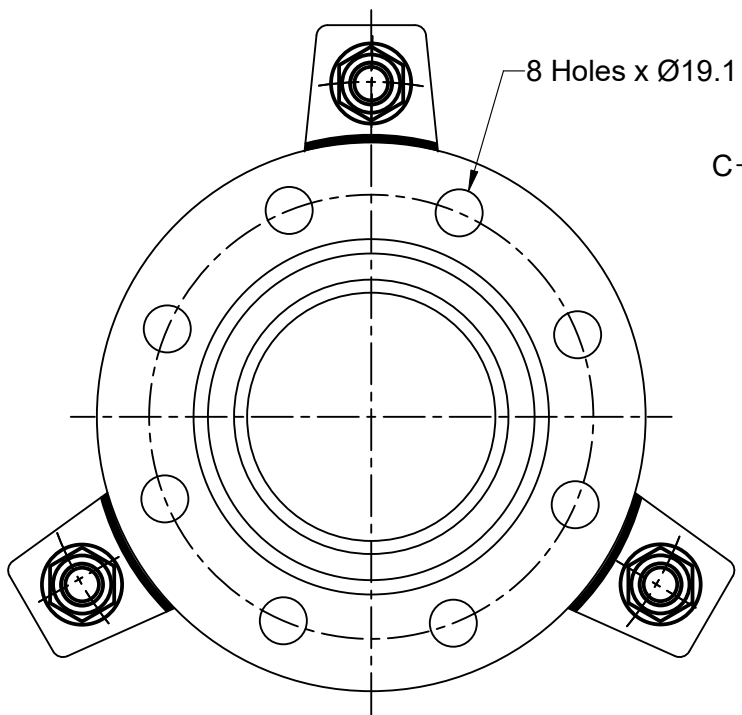
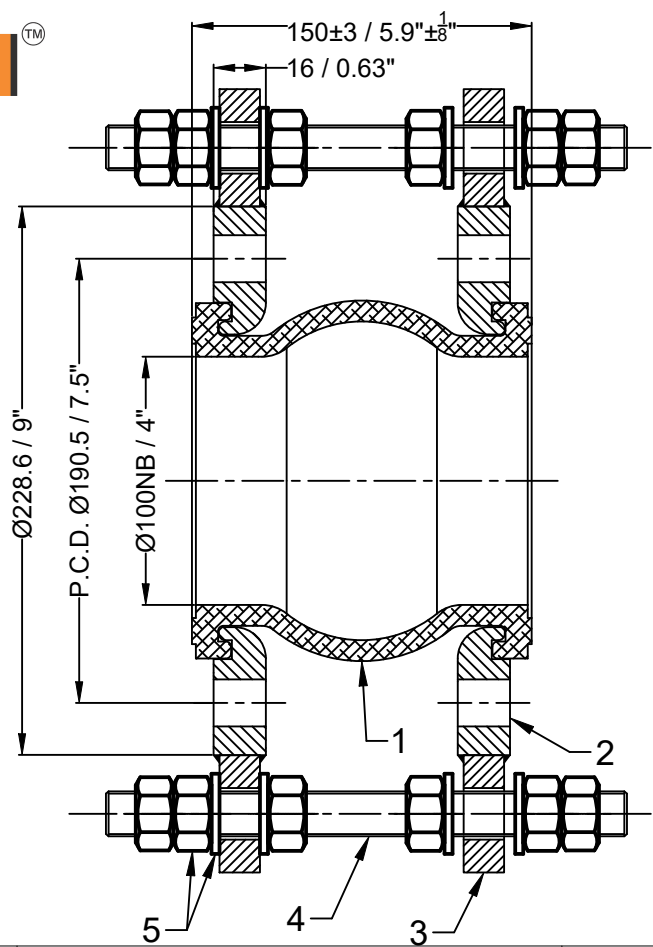


Confidential : All rights reserved ISO 16016. No part of this document may be reproduced, stored in a retrieval system, or transmitted, in any form or by any means, without prior permission. All rights reserved in the event of the granting of a patent or the registration of a utility model or design. Offenders will be held liable for the payment of damages.



A.	Inner Cover EPDM
B.	Outer Cover EPDM
C.	Reinforce nylon cord fabric
D.	Hard steel wire

Design Code:	FSA USA Standard			
Size:(DN)	100	4 "		
Pressure Rating :	16 bar(g)	232 PSI(g)		
Max. Temperature :	115°C	239°F		
Test Pressure:	24 bar(g)	348 PSI(g)		

Movement Capacity:	(+)		(-)	
	(mm)	(Inch)	(mm)	(Inch)
Axial Movement:	12	0.47"	16	0.63"
Lateral Movement:	16	0.63"	16	0.63"
Angular Movement:	15°	15°	15°	15°

Notes :
1. Bellow Tolerance will be as per FSA USA Standard.
2. Flange drill dimension will be as per ANSI B16.5#150.
3. Matching flange should be of flat face .
Testing :
1. Raw material check test for chemical composition and mechanical properties.
2. Dimension and visual check.

No	Revision Description	Date
----	----------------------	------

Sl.No.	Description	Material	Pcs
5	Nut , Washer	SS 304	30
4	Limit Rod	SS 304	3
3	Lugs	SS 304	6
2	Flange	SS 304	2
1	Bellow	EPDM	1

Bill of Material
Title:-EPDM Floating Flange Rubber Expansion Joint with Floating Flanges
Client Name:-
DRAWN BY
CHECKED BY
APPROVED BY
SCALE: NTS
DRAWING No.
DATE
REV:- 00

OWNER :
Easyflex / VibraSystems