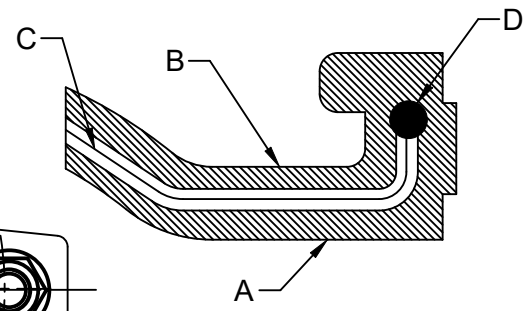
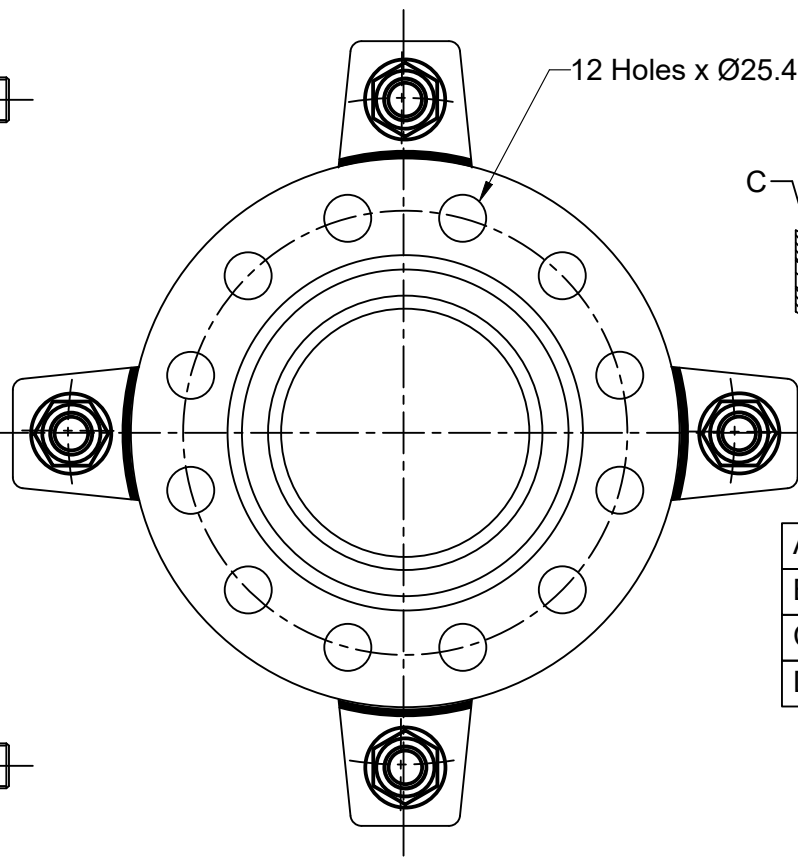
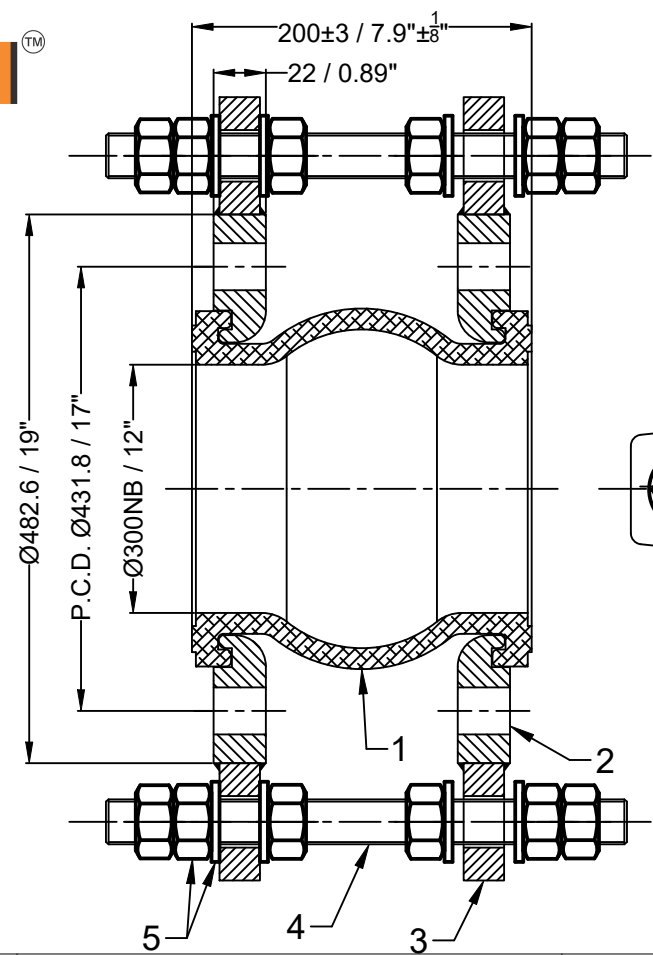


Confidential : All rights reserved ISO 16016. No part of this document may be reproduced, stored in a retrieval system, or transmitted, in any form or by any means, without prior permission. All rights reserved in the event of the granting of a patent or the registration of a utility model or design. Offenders will be held liable for the payment of damages.



A.	Inner Cover EPDM
B.	Outer Cover EPDM
C.	Reinforce nylon cord fabric
D.	Hard steel wire

Design Code:	FSA USA Standard			
Size:(DN)	300	12 "		
Pressure Rating :	16 bar(g)	232 PSI(g)		
Max. Temperature :	115°C	239°F		
Test Pressure:	24 bar(g)	348 PSI(g)		
Movement Capacity:	(+)		(-)	
	(mm)	(Inch)	(mm)	(Inch)
Axial Movement:	15	0.59"	16	0.63"
Lateral Movement:	16	0.63"	16	0.63"
Angular Movement:	15°	15°	15°	15°

**Notes :**

1. Bellow Tolerance will be as per FSA USA Standard.

2. Flange drill dimension will be as per ANSI B16.5#150.

3. Matching flange should be of flat face .

**Testing :**

1. Raw material check test for chemical composition and mechanical properties.

2. Dimension and visual check.

No	Revision Description	Date
----	----------------------	------

5	Nut , Washer	IS 1367 Cl 4.0,IS 2016 (Zinc Electroplated)	40
4	Limit Rod	IS 1367 Cl 4.6 (Zinc Electroplated)	4
3	Lugs	IS 2062 Gr.B (Hot Dip Galvanized)	8
2	Flange	IS 2062 Gr.B (Hot Dip Galvanized)	2
1	Bellow	EPDM	1
Sl.No.	Description	Material	Pcs

### Bill of Material

Title:-EPDM Floating Flange Rubber Expansion Joint with Floating Flanges

Client Name:-

DRAWN BY	
CHECKED BY	
APPROVED BY	
SCALE: NTS	
DRAWING No.	
DATE	
REV:- 00	

OWNER :  
Easyflex / VibraSystems

