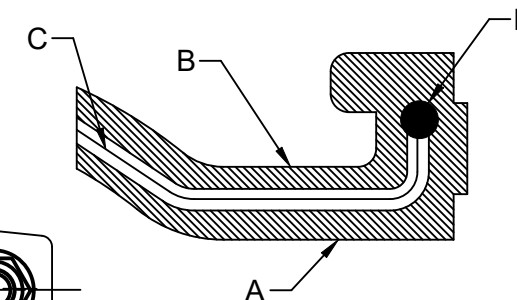


—16 Holes x Ø31.8 / Ø1.25"



Bellow Cross-Section Details

A.	Inner Cover EPDM
B.	Outer Cover EPDM
C.	Reinforce nylon cord fabric
D.	Hard steel wire

Design Code:	FSA USA Standard			
Size:(DN)	450		18 "	
Pressure Rating :	16 bar(g)		232 PSI(g)	
Max. Temperature :	115°C		239°F	
Test Pressure:	24 bar(g)		348 PSI(g)	
Movement Capacity:	(+)		(-)	
	(mm)	(Inch)	(mm)	(Inch)
Axial Movement:	15	0.59"	16	0.63"
Lateral Movement:	16	0.63"	16	0.63"
Angular Movement:	15°	15°	15°	15°

Space for Client Approval

5	Nut , Washer	IS 1367 Cl 4.0,IS 2016 (Zinc Electroplated)	4
4	Limit Rod	IS 1367 Cl 4.6 (Zinc Electroplated)	4
3	Lugs	IS 2062 Gr.B (Hot Dip Galvanized)	8
2	Flange	IS 2062 Gr.B (Hot Dip Galvanized)	2
1	Bellow	EPDM	1
Sl.No.	Description	Material	Qty

Seal & Signature

Bill of Material

Title:-EPDM Floating Flange Rubber Expansion Joint with Floating Flanges

Client Name:-

DRAWN BY

CHECKED BY

SCALE: NTS

DRAWING No.

DATE _____

REV:- 00

OWNER :
Easyflex / VibraSystems

Notes :

1. Bellow Tolerance will be as per FSA USA Standard.
2. Flange drill dimension will be as per ANSI B16.5#150.
3. Matching flange should be of flat face .

Testing :

1. Raw material check test for chemical composition and mechanical properties.
2. Dimension and visual check.

No	Revision Description	Date