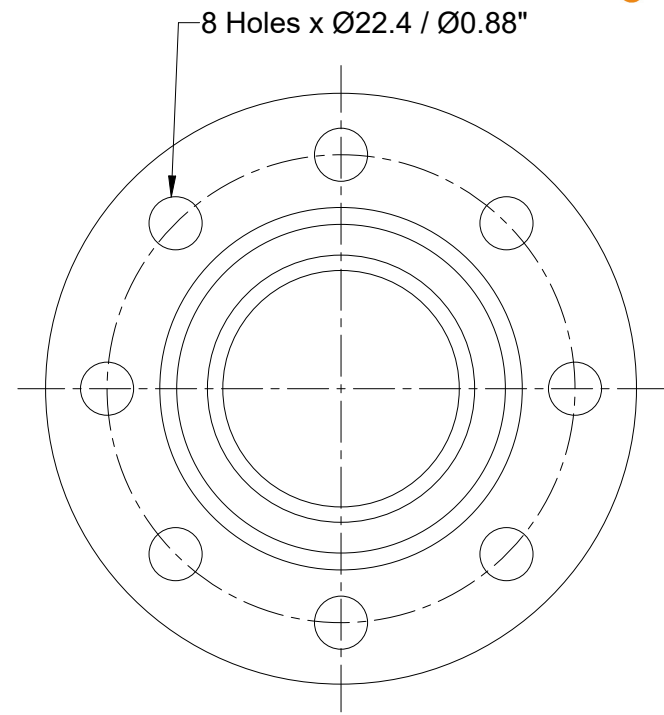
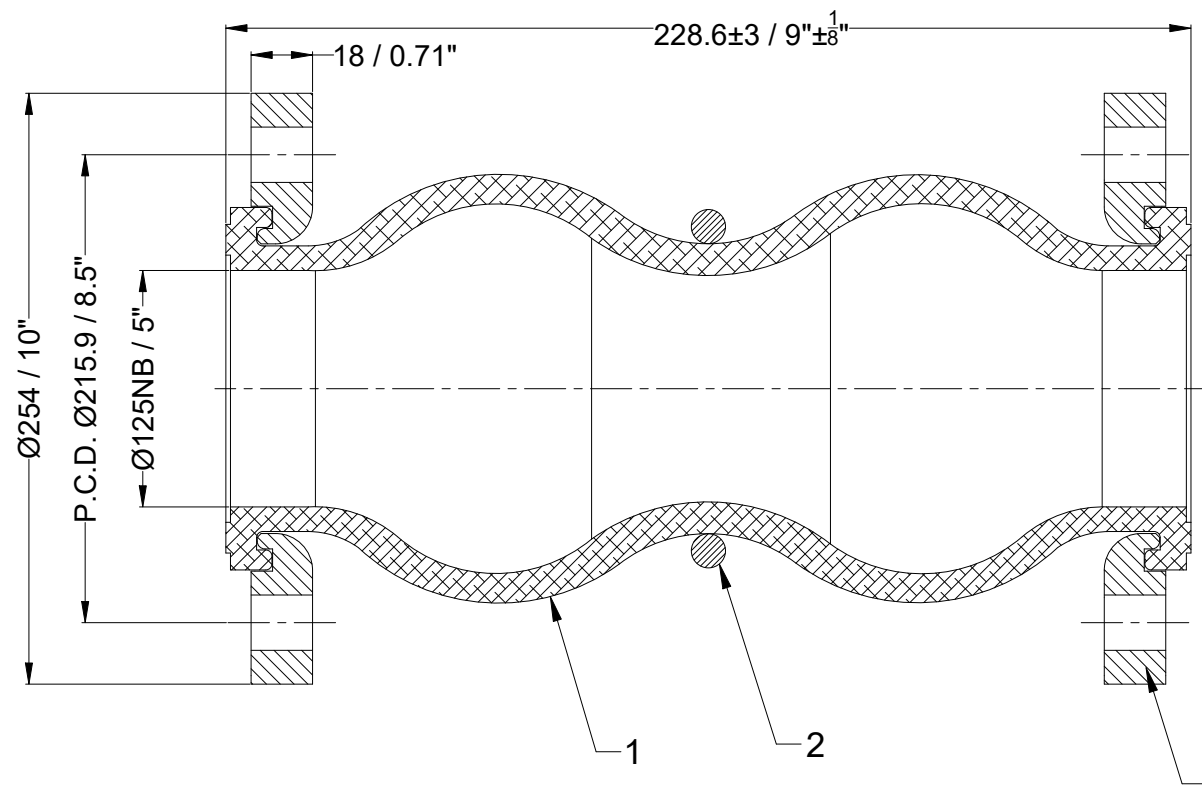
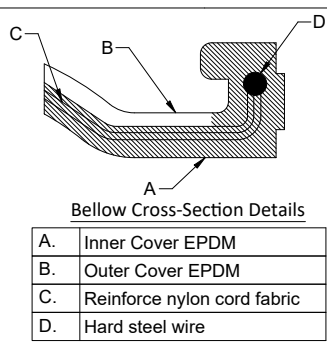


Confidential : All rights reserved ISO 16016. No part of this document may be reproduced, stored in a retrieval system, or transmitted, in any form or by any means, without prior permission. All rights reserved in the event of the granting of a patent or the registration of a utility model or design. Offenders will be held liable for the payment of damages.



Design Code:	FSA USA Standard			
Size:(DN)	125		5 "	
Pressure Rating :	16 bar(g)		232 PSI(g)	
Max. Temperature :	115°C		239°F	
Test Pressure:	24 bar(g)		348 PSI(g)	
Movement Capacity:	(+)		(-)	
	(mm)	(Inch)	(mm)	(Inch)
Axial Movement:	35	1.375"	50.8	2"
Lateral Movement:	39.7	1.56"	39.7	1.56"
Angular Movement:	30°	30°	30°	30°



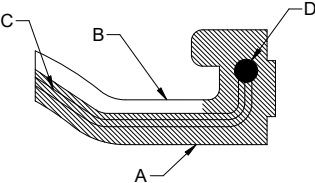
A.	Inner Cover EPDM
B.	Outer Cover EPDM
C.	Reinforce nylon cord fabric
D.	Hard steel wire

Notes :

1. Bellow Tolerance will be as per FSA USA Standard.
2. Flange drill dimension will be as per ANSI B16.5#150.
3. Matching flange should be of flat face .

Testing :

1. Raw material check test for chemical composition and mechanical properties.
2. Dimension and visual check.

		
<u>Bellow Cross-Section Details</u>		
A.	Inner Cover EPDM	
B.	Outer Cover EPDM	
C.	Reinforce nylon cord fabric	
D.	Hard steel wire	

<u>Seal & Signature</u>		
No	Revision Description	Date

3	Flange	SS 304	2
2	Ring	SS 304	1
1	Bellow	EPDM	1
Sl.No.	Description	Material	Pcs
Bill of Material			
Title:-EPDM Twin Sphere Floating Flange Rubber Expansion Joint with SS304 Floating Flanges			
Client Name:-			
DRAWN BY			OWNER : Easyflex / VibraSystems
CHECKED BY			
APPROVED BY			
SCALE: NTS			
DRAWING No.			
DATE		REV:- 00	