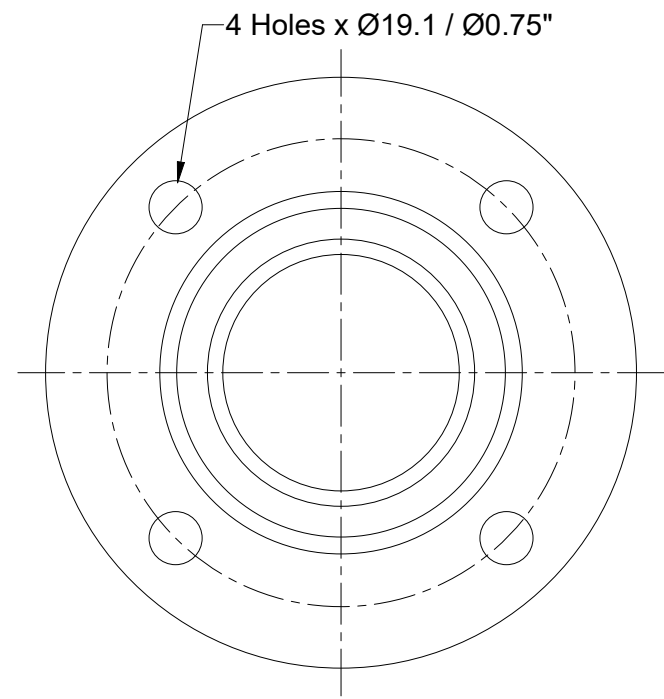
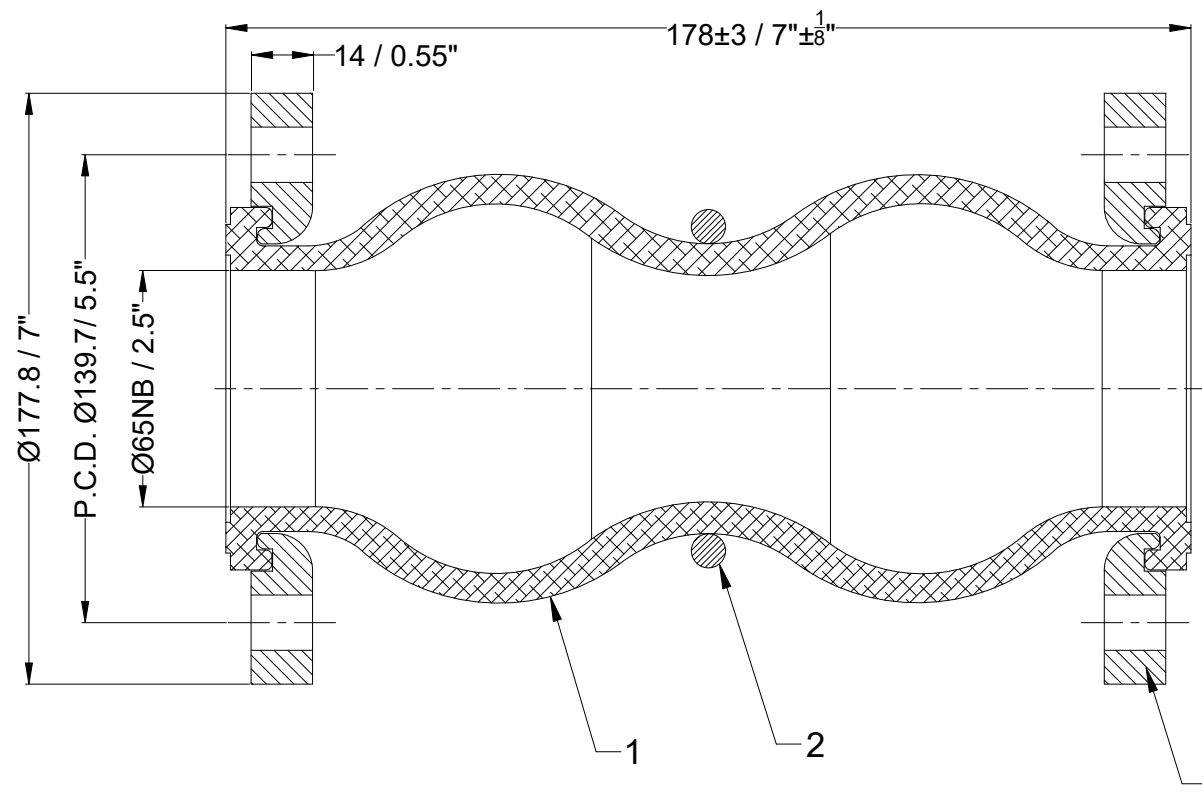
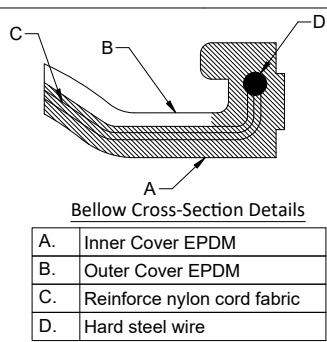


Confidential : All rights reserved ISO 16016. No part of this document may be reproduced, stored in a retrieval system, or transmitted, in any form or by any means, without prior permission. All rights reserved in the event of the granting of a patent or the registration of a utility model or design. Offenders will be held liable for the payment of damages.



Design Code:	FSA USA Standard			
Size:(DN)	65		2.5 "	
Pressure Rating :	16 bar(g)		232 PSI(g)	
Max. Temperature :	115°C		239°F	
Test Pressure:	24 bar(g)		348 PSI(g)	
Movement Capacity:	(+)		(-)	
	(mm)	(Inch)	(mm)	(Inch)
Axial Movement:	28.6	1.125"	50.8	2"
Lateral Movement:	44.4	1.75"	44.4	1.75"
Angular Movement:	35°	35°	35°	35°



A.	Inner Cover EPDM
B.	Outer Cover EPDM
C.	Reinforce nylon cord fabric
D.	Hard steel wire

**Notes :**

- Bellow Tolerance will be as per FSA USA Standard.
- Flange drill dimension will be as per ANSI B16.5#150.
- Matching flange should be of flat face .

**Testing :**

- Raw material check test for chemical composition and mechanical properties.
- Dimension and visual check.

<div>Seal &amp; Signature</div>				
No	Revision Description			Date

3	Flange	SS 304	2
2	Ring	SS 304	1
1	Bellow	EPDM	1
Sl.No.	Description	Material	Pcs

**Bill of Material**

Title:-EPDM Twin Sphere Floating Flange Rubber Expansion Joint with SS304 Floating Flanges			
Client Name:-			
DRAWN BY		OWNER : Easyflex / VibraSystems	
CHECKED BY			
APPROVED BY			
SCALE: NTS			
DRAWING No.			
DATE			
		REV:- 00	