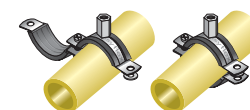
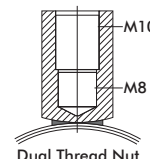




EPDM lined split-ring type pipe clamps with integral fixing nuts. Suitable for ceiling suspension or vertical wall mounting of piping. Designed with a number of features which enhance product performance and reliability.

Features

- EPDM Lining - Easyflex clamps have high grade EPDM lining, which is significantly superior in terms of product life compared to commercial grade rubber as provided by some others.
- Both halves of the clamp are ribbed, for greater strength.
- Long thread engagement - All Easyflex EFRLC series split clamps are designed with extended thread lengths on the lips of the upper half. This ensures safer installation than clamps offered by others, that have barely one thread engagement also prevents loosening of the clamp's grip over a period of time due the minor vibration that is generally present in piping systems and causes thread wear.
- Twin-thread Nuts - Clamps for pipe ODs 2.55" to 4.56" have M8+M10 twin-thread suspension nuts (as shown), for flexibility.
- Side bolts have a slotted-cross head for convenience.
- Custom designed stainless steel (SS 304 / 316) split clamps are available on request.

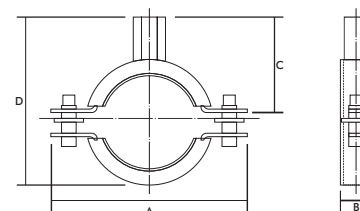


Material : Steel, EPDM

Finish : Electro galvanized post manufacture.

Other Options : Epoxy Powder Coated finish (Suffix 'PC')
Hot Dip Galvanised finish (Suffix 'HDG')

**Compliance - EG to ASTM B633 SC3
BS 1706 FE/ZN 12**



Model No.	Size (inches)	Dia (inches)	Range (inches)	Dimension (inches)				Thick. (inches)	Break Load Lbs	Safe Load Lbs
				A	B	C	D			
EFRLC018	3/8"	0.6	0.6 - 0.7	2.4	0.8	1.0	1.4	0.06	990	330
EFRLC022	1/2"	0.9	0.8 - 1.0	2.6	0.8	1.1	1.7	0.06	990	330
EFRLC028	3/4"	1.1	1.0 - 1.2	2.8	0.8	1.3	2.0	0.06	990	330
EFRLC035	1"	1.4	1.3 - 1.4	3.3	0.8	1.4	2.2	0.06	990	330
EFRLC040	1 1/4"	1.7	1.5 - 1.7	3.6	0.8	1.5	2.5	0.06	990	330
EFRLC048	1 1/2"	1.9	1.9 - 2.0	3.9	0.8	1.7	2.8	0.06	990	330
EFRLC054		2.1	2.1 - 2.3	4.1	0.8	1.8	3.0	0.06	990	330
EFRLC060	2"	2.4	2.4 - 2.5	4.3	0.8	1.9	3.2	0.06	990	330
EFRLC063		2.5	2.5 - 2.6	4.5	0.8	2.0	3.5	0.06	990	330
EFRLC070		2.8	2.7 - 2.8	4.7	0.8	2.1	3.6	0.06	990	330
EFRLC075	2 1/2"	3.0	2.9 - 3.1	4.9	0.8	2.2	3.8	0.08	1320	440
EFRLC083		3.3	3.2 - 3.4	5.5	0.8	2.4	4.3	0.08	1320	440
EFRLC090	3"	3.5	3.4 - 3.6	5.7	0.8	2.5	4.4	0.08	1320	440
EFRLC100	3 1/2"	3.9	3.9 - 4.1	6.1	0.8	2.7	4.8	0.08	1320	440
EFRLC110		4.3	4.2 - 4.4	6.5	0.8	2.9	5.2	0.08	1320	440
EFRLC115	4"	4.5	4.4 - 4.6	6.7	0.8	3.1	5.4	0.08	1320	440
EFRLC125		4.9	4.9 - 5.1	7.1	0.8	3.2	5.7	0.08	1320	440
EFRLC133		5.2	5.2 - 5.4	7.2	0.8	3.3	6.1	0.08	1320	440
EFRLC140	5"	5.5	5.4 - 5.6	7.7	0.8	3.5	6.3	0.08	1320	440
EFRLC150		5.9	5.8 - 6.0	8.1	0.8	3.7	6.7	0.08	1320	440
EFRLC160		6.3	6.3 - 6.5	8.5	1.0	3.9	7.1	0.08	1320	440
EFRLC168	6"	6.6	6.6 - 6.8	8.8	1.0	4.0	7.4	0.08	1320	440
EFRLC200	8"	7.9	7.9 - 8.3	10.1	1.0	4.6	8.7	0.10	1980	660



Ordering

For any of piping other than steel, please select EFRLC model based on the actual outer pipe diameter. Selecting on the basis of nominal sizes for these pipes can result in errors on account of the large number of schedules prevalent.

Model No.	Copper (inches)	Steel (Sch 40)		UPVC / PE	ABS
		Inches	mm		
EFRLC018	15, 18		16		
EFRLC022	22	1/2"	22	20	DN15 (21.4)
EFRLC028	24, 28	3/4"	28	25	DN20 (26.8)
EFRLC035	35	1"	35	32, 38	DN25 (33.6)
EFRLC040	42	1 1/4"	42	40, 43	DN32 (42.3)
EFRLC048		1 1/2"	48	45	DN40 (48.3)
EFRLC054	54			54	
EFRLC060	64	2"	60	60	DN50 (60.4)
EFRLC063					
EFRLC070	67, 70			70	
EFRLC075	76	2 1/2"	75	75	DN65 (75.4)
EFRLC083	80			83	
EFRLC090		3"	90	90	
EFRLC100	102, 105			102	DN80 (88.9)
EFRLC110	108			110	
EFRLC115		4"	115	115	DN100 (114.3)
EFRLC125	125			125	
EFRLC133				135	
EFRLC140		5"	140	140	DN125 (140.2)
EFRLC150				152	
EFRLC160	159			160	
EFRLC168	167	6"	168		DN150 (168.3)
EFRLC200	206			200	
EFRLC220		8"	219	220, 225	DN200 (225.0)
EFRLC250				250	DN225 (250.4)
EFRLC315					DN300 (315.5)

- Due to policy of continual improvement, the specifications are subject to change without prior notice.
- Measurements are subject to 5% tolerance.
- To achieve good sound suppression do not over load fitting.