



Application: Hanger designed to facilitate axial movement of suspended piping caused by thermal expansion / contraction or mechanical shifting. Usage of Roller Hangers is recommended for installations with long horizontal pipe involving changes in the temperature of the fluid medium or external environment. If pipe are gripped rigidly in such cases, forces arising from expansion / contraction can cause piping failure or structural damage.

Features

- Easyflex Rollers are made from solid steel shaft, for higher load bearing capacity and smoother operation than the hollow cast iron rollers supplied by others manufacturers.
- Yoke design permits vertical level adjustment of 1.18"-2.95" (based on hanger size) after pipe installation.
- Supplied fully galvanized as standard.

Material

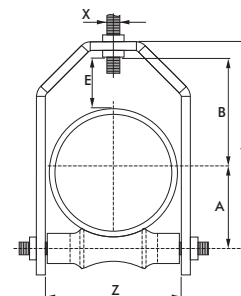
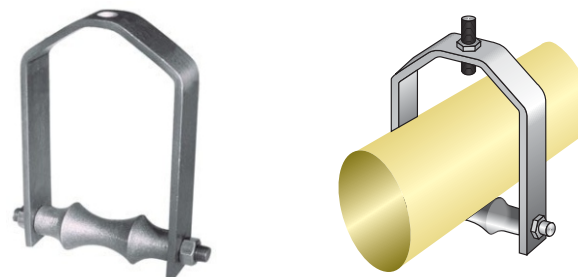
Roller, Roller Pin, Frame "Steel".

Finish

Electro galvanized post manufacture.

Other Options

- Epoxy Powder Coated finish (Suffix 'PC')
- Hot Dip Galvanised finish (Suffix 'HDG')
- Stainless Steel construction (Suffix 'SS')



Compliance - US Standards MSS-SP58 (Type 43), MSS-SP69; EG to ASTM B633 SC3, BS1706 FE/ZN12

Model No.	Size	Dimensions (inches)							Max. Recom. Load Lbs
		A	B	Bracket Size	E	X	Y	Z	
EFRLH035	1"	1.10	1.69	0.12x0.98	1.26	0.39	3.54	1.81	220
EFRLH042	1 1/4"	1.30	1.81	0.12x0.98	1.26	0.39	3.78	1.85	220
EFRLH048	1 1/2"	1.50	1.97	0.12x0.98	1.26	0.39	4.21	2.44	220
EFRLH060	2"	1.61	2.24	0.12x0.98	1.26	0.39	4.80	2.52	275
EFRLH075	2 1/2"	1.97	2.91	0.12x0.98	1.73	0.47	5.83	3.62	330
EFRLH090	3"	2.20	3.19	0.24x1.26	1.73	0.47	6.34	3.70	330
EFRLH100	3 1/2"	2.56	3.46	0.24x1.26	1.77	0.47	7.09	4.33	418
EFRLH115	4"	2.72	3.66	0.24x1.57	1.81	0.47	7.56	4.80	550
EFRLH140	5"	3.46	4.49	0.24x1.97	1.97	0.47	9.17	5.98	660
EFRLH168	6"	4.02	4.92	0.24x1.97	1.97	0.75	10.24	7.09	660
EFRLH220	8"	5.16	5.98	0.39x2.56	1.97	0.87	12.83	9.06	1045
EFRLH273	10"	6.34	7.01	0.39x2.56	1.97	0.87	15.00	11.22	1045
EFRLH323	12"	7.56	8.19	0.47x2.56	2.17	0.87	17.32	13.19	1210
EFRLH355	14"	8.35	8.70	0.47x2.56	2.17	0.98	18.82	14.65	1210
EFRLH406	16"	9.17	9.72	0.47x2.56	2.17	0.98	20.63	16.57	1287
EFRLH457	18"	10.51	11.14	0.47x2.56	2.56	0.98	23.23	18.66	1485
EFRLH508	20"	11.81	12.01	0.63x2.95	2.56	1.26	26.14	20.55	1595
EFRLH610	24"	13.82	14.45	0.63x3.94	2.95	1.26	31.02	24.80	2145

- Due to policy of continuous improvement, the specifications are subject to change without prior notice.
- Measurements are subject to 5% tolerance.