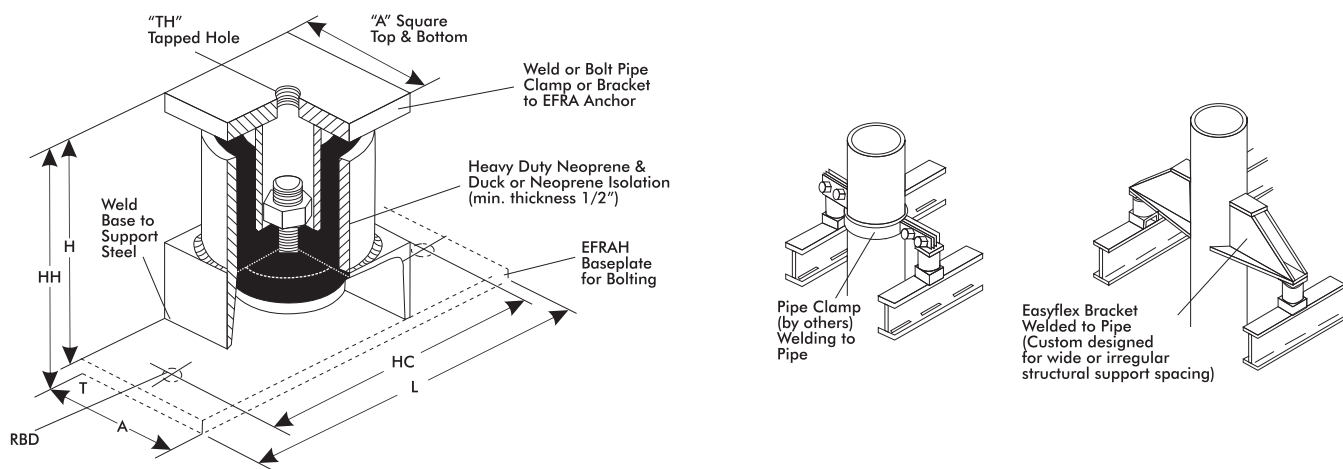




## Riser Anchors

- Each pair of EFRA(H) Riser Anchors provides high frequency noise and vibration isolation for those locations where movement must be controlled.
- When the anchors are attached to piping as shown in the illustrations below, all expansion will be directed from this point.
- Anchors are always used in pairs.



### Type EFRA and EFRAH Dimension (inches)

| Type   | Size | A     | H     | L     | T    | HC    | HH    | RBD  | TH    |
|--------|------|-------|-------|-------|------|-------|-------|------|-------|
| EFRA-  | 2.95 | 2.95  | 4.41  | 5.91  | 0.24 | 4.92  | 4.65  | 0.35 | 0.47" |
|        | 8    | 3.94  | 6.89  | 10.83 | 0.35 | 8.35  | 7.24  | 0.59 | 0.63" |
|        | 14   | *     | 7.09  | 11.81 | 0.47 | 9.33  | 7.60  | 0.71 | None  |
| EFRAH- | 24   | 8.86  | 10.83 | 14.25 | 0.71 | 11.81 | 11.54 | 1.22 | None  |
|        | 32   | 10.83 | 13.27 | 17.20 | 0.98 | 14.25 | 14.25 | 1.46 | None  |

RBD-Required Bolt Dia. for Max. Loading

Change designation to EFRAH when base plate with bolt holes is required.

\*Size 14" – Top is 5" x 5" , Bottom is 6" x 6" .

### Type EFRA and EFRAH Ratings

| Type   | Size | Anchoring Capacity per Pair |       | Rated Defl<br>(In) |
|--------|------|-----------------------------|-------|--------------------|
|        |      | (lbs)                       | (Kg)  |                    |
| EFRA-  | 2.95 | 1000                        | 453   | 0.1                |
|        | 8    | 6000                        | 2722  | 0.1                |
|        | 14   | 24000                       | 10886 | 0.1                |
| EFRAH- | 24   | 60000                       | 27216 | 0.1                |
|        | 32   | 100000                      | 45359 | 0.1                |