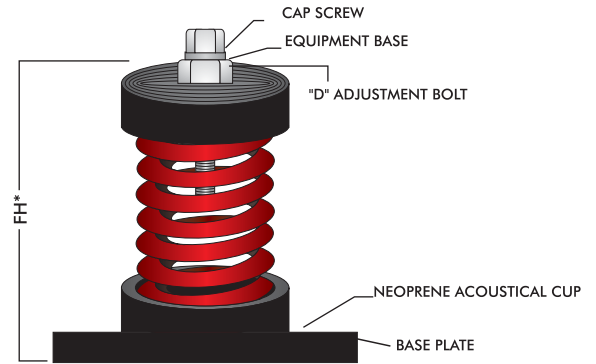
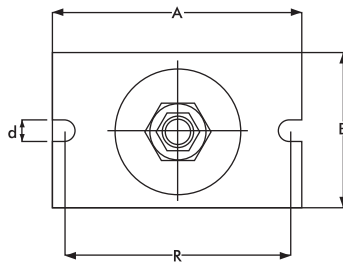




Applications

EFCUS Cup Spring isolators are recommended for use in isolating sources of noise and vibration located near critically quiet areas. They are highly effective for control of both high and low frequency vibration produced by reciprocating refrigeration compressors, pumps, packaged air-handling and air-conditioning equipments, centrifugal and axial fans, inertia bases, internal combustion engines. etc.



Features

- Laterally stable springs with neoprene top and base.
- Color-Coded springs according to load ratings.
- Non-skid bolt down base.
- Plated leveling / lock bolt.
- Isolates low frequency vibration.
- Springs are designed for 50% overload capacity

ISOLATOR MODEL	COLOR CODE	RATED LOAD (lbs)	DEFLECTION (inch)	A (inch)	B (inch)	R (inch)	FH* (inch)	D	d
EFCUS 25-30	YELLOW	66	1	4.41	2.99	3.62	4.57	M-16	M-8
EFCUS 25-60	BLUE	132	1	4.41	2.99	3.62	4.57	M-16	M-8
EFCUS 25-100	GREEN	220	1	4.41	2.99	3.62	4.57	M-16	M-8
EFCUS 25-160	ORANGE	352	1	4.41	2.99	3.62	4.57	M-16	M-8
EFCUS 25-200	RED	440	1	4.41	2.99	3.62	4.57	M-16	M-8
EFCUS 25-250	PURPLE	550	1	4.41	2.99	3.62	4.57	M-16	M-8
EFCUS 25-300	GREY	660	1	5.51	3.94	4.53	5.91	M-18	M-12
EFCUS 25-400	ORANGE	880	1	5.51	3.94	4.53	5.91	M-18	M-12
EFCUS 25-500	BROWN	1100	1	5.51	3.94	4.53	5.91	M-18	M-12
EFCUS 25-600	BLACK	1320	1	5.51	3.94	4.53	5.91	M-18	M-12
EFCUS 25-800	RED	1760	1	5.51	3.94	4.53	5.91	M-18	M-12
EFCUS 25-1050	WHITE	2310	1	5.51	3.94	4.53	5.91	M-18	M-12
EFCUS 25-1250	GREEN	2750	1	5.51	3.94	4.53	5.91	M-18	M-12

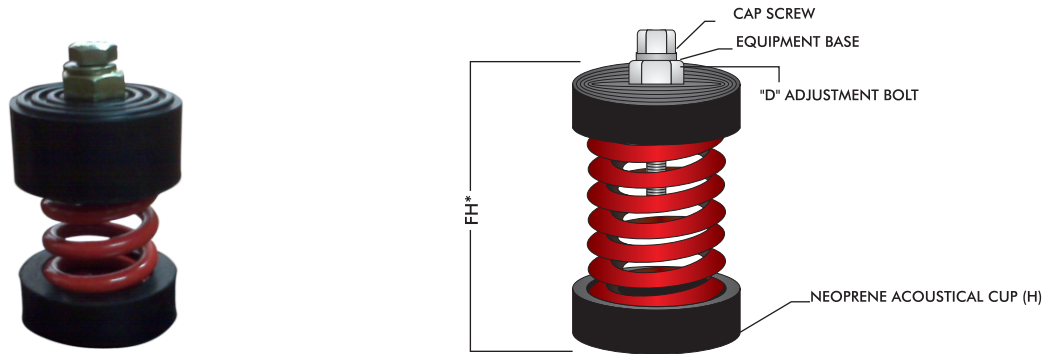
Compliance - Springs designed according to BS 1726 (Part 1) and recommendations made by SAE (US) and ASHRAE

- Due to policy of continual improvement, the specifications are subject to change without prior notice.
- Measurements are subject to 5% tolerance.
- To achieve good sound suppression do not over load fitting.



Applications

EFCUSA Cup Spring isolators are recommended for use in isolating sources of noise and vibration located near critically quiet areas. They are highly effective for control of both high and low frequency vibration produced by reciprocating refrigeration compressors, pumps, packaged air-handling and air-conditioning equipments, centrifugal and axial fans, inertia bases, internal combustion engines. etc.



Features

- Laterally stable springs with neoprene top and base.
- Color-Coded springs according to load ratings.
- Non-skid bolt down base.
- Plated leveling / lock bolt.
- Isolates low frequency vibration.
- Springs are designed for 50% overload capacity

ISOLATOR MODEL	COLOR CODE	RATED LOAD (lbs)	DEFLECTION (inch)	FH* (inch)	D	H (inch)
EFCUSA 25-30	YELLOW	66	1	4.65	M16	2.68
EFCUSA 25-60	BLUE	132	1	4.65	M16	2.68
EFCUSA 25-100	GREEN	220	1	4.65	M16	2.68
EFCUSA 25-160	ORANGE	352	1	4.65	M16	2.68
EFCUSA 25-200	RED	440	1	4.65	M16	2.68
EFCUSA 25-250	PURPLE	550	1	4.65	M16	2.68
EFCUSA 25-300	GREY	660	1	5.59	M18	3.54
EFCUSA 25-400	ORANGE	880	1	5.59	M18	3.54
EFCUSA 25-500	BROWN	1100	1	5.59	M18	3.54
EFCUSA 25-600	BLACK	1320	1	5.59	M18	3.54
EFCUSA 25-800	RED	1760	1	5.59	M18	3.54
EFCUSA 25-1050	WHITE	2310	1	5.59	M18	3.54
EFCUSA 25-1250	GREEN	2750	1	5.59	M18	3.54

Compliance - Springs designed according to BS 1726 (Part 1) and recommendations made by SAE (US) and ASHRAE

- Due to policy of continual improvement, the specifications are subject to change without prior notice.
- Measurements are subject to 5% tolerance.
- To achieve good sound suppression do not over load fitting.