

Design Features

- Unique expanding rubber and fixing of spring which also provides high frequency attenuation.
- Nominal 0.75", 1" & 2" deflection colour coded springs with 50% overload capacity.
- Can be bolted to supporting structure or free standing on 6mm thick ribbed rubber pad.
- Fully height adjustable.
- Zinc plated metals.
- No snubbing gives maximum efficiency.

This unique range of open spring mounting uses an integral rubber end fixing of the spring which sets them apart from all other designs. Loose springs and plates are now history and high frequency and noise attenuation is provided regardless of whether rubber seating pad is used or not.

Originally designed for use with type IPF Inertia Pouring Frames, the EFOS Mountings are now widely used to isolate vibration from every conceivable type of rotating and reciprocating machine. Some examples being air handing units, axial and centrifugal fans, low level pipe work, ductwork, condensing units, pumps, generating sets, chillers, etc. Where control of transient motion is required open spring mountings can be used in conjunction with our Viscous Dampers Type EFVD.

Isolation Efficiency at Typical Machine Speeds

| M/C Speed (rpm) | EFFICIENCY % | | |
|-----------------|--------------|---------|---------|
| | 0.50" DEFL | 1" DEFL | 2" DEFL |
| 300 | do not use | 34.0 | 75.2 |
| 500 | 68.7 | 83.3 | 92.3 |
| 750 | 88.1 | 93.2 | 96.7 |
| 1000 | 93.7 | 96.3 | 98.2 |
| 1200 | 95.5 | 97.4 | 98.7 |
| 1500 | 97.3 | 98.4 | 99.2 |
| 1750 | 98.0 | 99.8 | 99.4 |
| 2000 | 98.5 | 99.1 | 99.5 |

| Size | LOAD RANGE (lbs) | NOMINAL DEFLECTION (inch) |
|--------|------------------|---------------------------|
| EFOSB | 22-220 | 0.75 |
| EFOS25 | 66-5060 | 1 |
| EFOS50 | 220-2860 | 2 |

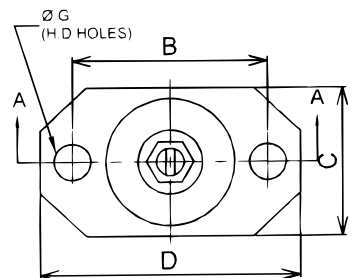
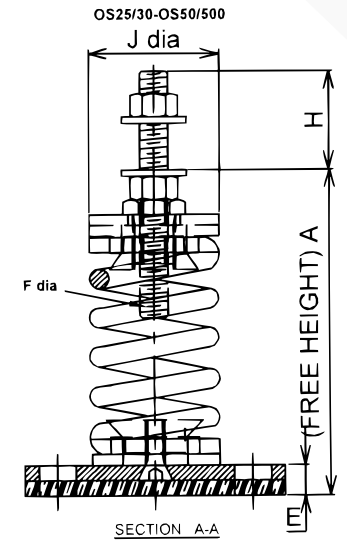
This above figures are theoretical values only based on the vertical natural frequency of the spring system assuming in infinitely stiff structural supports. The effects of high frequency spring coil resonances on low frequency performance are also ignored.

Compliance - Springs designed according to BS 1726 (Part 1) and recommendations made by SAE (US) and ASHRAE

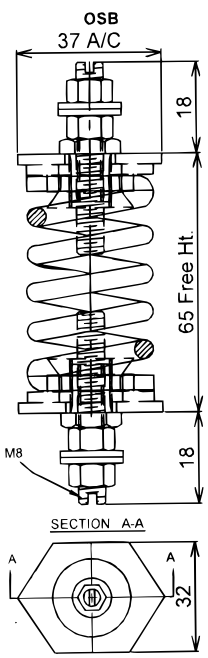
- Due to policy of continual improvement, the specifications are subject to change without prior notice.
- Measurements are subject to 5% tolerance.
- To achieve good sound suppression do not over load fitting.



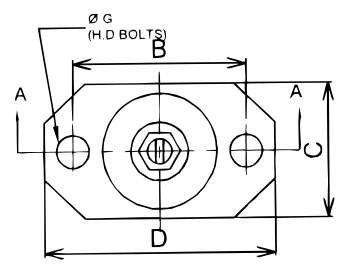
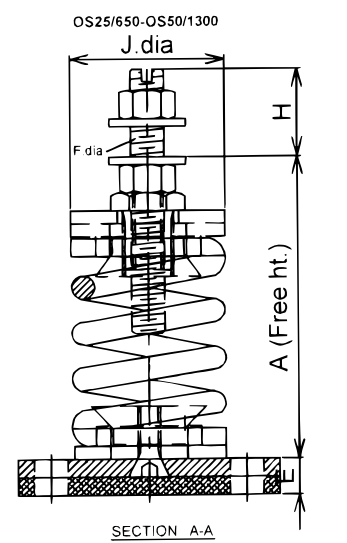
| PART NO. | COLOUR CODE | RATED LOAD (lbs) | DEFLECTION AT RATED | DIMENSIONS (inches) | | | | | | | | | | |
|-------------|--------------|------------------|---------------------|---------------------|------|------|------|------|-----|------|------|------|--|--|
| | | | | A | B | C | D | E | F | G | H | J | | |
| EFOS25/30 | Yellow | 66 | 1" | | | | | | | | | | | |
| EFOS25/60 | Green | 132 | 1" | | | | | | | | | | | |
| EFOS25/100 | Blue | 220 | 1" | 4.53 | 3.35 | 2.76 | 4.33 | 0.39 | M10 | 0.39 | 0.79 | 2.17 | | |
| EFOS25/160 | White | 352 | 1" | | | | | | | | | | | |
| EFOS25/250 | Red | 550 | 1" | | | | | | | | | | | |
| EFOS25/200 | Red | 440 | 1" | | | | | | | | | | | |
| EFOS25/300 | Purple | 660 | 1" | | | | | | | | | | | |
| EFOS25/400 | Grey | 880 | 1" | | | | | | | | | | | |
| EFOS25/500 | Orange | 1100 | 1" | 6.30 | 4.33 | 3.94 | 5.51 | 0.43 | M16 | 0.47 | 1.06 | 2.95 | | |
| EFOS25/600 | Brown | 1320 | 1" | | | | | | | | | | | |
| EFOS25/700 | Orange | 1540 | 1" | | | | | | | | | | | |
| EFOS25/800 | Black | 1760 | 1" | | | | | | | | | | | |
| EFOS50/100 | Yellow | 220 | 2" | | | | | | | | | | | |
| EFOS50/200 | Green | 440 | 2" | | | | | | | | | | | |
| EFOS50/300 | Blue | 660 | 2" | 7.40 | 4.33 | 3.94 | 5.51 | 0.43 | M16 | 0.47 | 1.06 | 2.95 | | |
| EFOS50/400 | White | 880 | 2" | | | | | | | | | | | |
| EFOS50/500 | Black | 1100 | 2" | | | | | | | | | | | |
| EFOS25/650 | Yellow | 1430 | 1.02" | | | | | | | | | | | |
| EFOS25/850 | Green | 1870 | 1.06 | 7.17 | 4.33 | 3.94 | 5.51 | 0.43 | M16 | 0.47 | 1.06 | 2.95 | | |
| EFOS25/1050 | Blue | 2310 | 1.02" | | | | | | | | | | | |
| EFOS25/1250 | White | 2750 | 1.02" | | | | | | | | | | | |
| EFOS25/1300 | Red | 2860 | 1.06" | | | | | | | | | | | |
| EFOS25/1600 | Purple | 3520 | 1" | 8.86 | 8.27 | 5.91 | 9.84 | 0.71 | M24 | 0.63 | 2.01 | 2.95 | | |
| EFOS25/2000 | Grey | 4400 | 1.02" | | | | | | | | | | | |
| EFOS25/2300 | Brown | 5060 | 1.14" | | | | | | | | | | | |
| EFOS50/510 | Black/Purple | 1122 | 2.01" | | | | | | | | | | | |
| EFOS50/760 | Black/Grey | 1672 | 2.01" | | | | | | | | | | | |
| EFOS50/1000 | Black/Orange | 2200 | 2" | 9.45 | 8.27 | 5.91 | 9.84 | 0.71 | M20 | 0.63 | 1.65 | 3.15 | | |
| EFOS50/1300 | Black/Brown | 2860 | 2.09" | | | | | | | | | | | |



Spring Stiffness is linear over its working range.



| PART NO. | COLOUR CODE | RATED LOAD (LBS) | DEFLECTION AT RATED LOAD (INCHES) |
|-------------|-------------|------------------|-----------------------------------|
| EFOSB20/10 | Purple | 22 | 0.75 |
| EFOSB20/15 | Yellow | 33 | 0.75 |
| EFOSB20/20 | Grey | 44 | 0.75 |
| EFOSB20/40 | Green | 88 | 0.75 |
| EFOSB20/70 | Red | 154 | 0.75 |
| EFOSB20/100 | Blue | 220 | 0.75 |



Compliance - Springs designed according to BS 1726 (Part 1) and recommendations made by SAE (US) and ASHRAE

- Due to policy of continual improvement, the specifications are subject to change without prior notice.
- Measurements are subject to 5% tolerance.
- To achieve good sound suppression do not over load fitting.